

## FLAKING (OF POLYCHROMY)

### Muestra

Sculpture of the upper floor of the main Altarpiece of Guarda Cathedral. Guarda. Portugal.

Oolitic white limestone with very refined grain, polychromed with gold leaf.

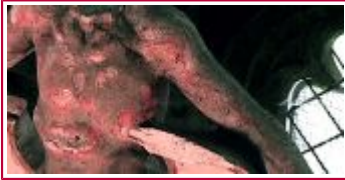
---

### Causas de la patología

Fungal growths (and salt subflorescences).

---

### Imagen de visu



**Autor:** Cetec-patrimoni

**Descripción:** On the right side of the sculpture (the arm) can be seen flaking of gold leaf and the red bole of the polychromy. In the centre of the sculpture (the chest and the abdomen) the pathology is a contour scaling and spalling that affects the surface of the stone.

---

### Imagen detalle / macro



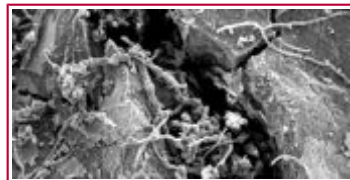
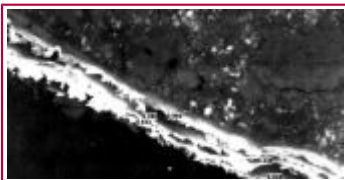
**Autor:** Cetec-patrimoni

**Aumentos:** x40

**Descripción:** Polychromed surfaces with loss of the gold leaf (remains on the left) and red bole with hyphas growth (centre and right).

---

### Imagen Microscopía



**Autor:** Cetec-patrimoni

**Aumentos:**

**Descripción:** Figure 1. Different layers of gold leaf and preparation coating (bole).

Figure 2. Hyphas breaking and disintegrating the bole, and generating growth that connects the gilded surface and the stone.

---

### Patologías Asociadas

Dust deposit.

Salt subflorescences.

---

### **Bibliografía**

ICOMOS-ICS (2008). Illustrated glossary on stone deterioration pattern.

[http://international.icomos.org/publications/monuments\\_and\\_sites/15/pdf/Monuments\\_and\\_Sites\\_15\\_ISCS\\_Glossary\\_Stone.pdf](http://international.icomos.org/publications/monuments_and_sites/15/pdf/Monuments_and_Sites_15_ISCS_Glossary_Stone.pdf)

ORDAZ, J., & ESBERT, R. (1988). Glosario de términos relacionados con el deterioro de las piedras de construcción. *Materiales de Construcción*, 38 (209): 39-45. doi: 10.3989/mc.1988.v38.i209.847

---

### **Autor**

Manuel Iglesias Campos. manuel.iglesias@cetec-patrimoni.com

Restorer

---

### **Institución o Empresa**

Universitat de Barcelona

---

### **Artículos Publicados**

IGLESIAS, M. et al. (2004). Pathologies of the Altarpiece from the Main altar of the Sé da Guarda. Portugal. In *Proceedings 6th International Symposium on the Conservation of Monuments in the Mediterranean Basin*. Lisboa, 2004. pp. 153-158 (in CD).

---